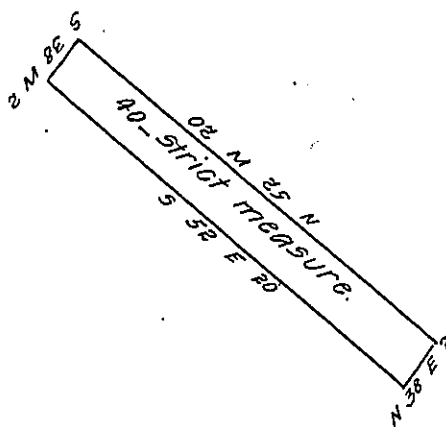


York County Shore



Lancaster County Shore.

A Draught of long rock Island situate in Martic township Lancaster County opposite to lands of Joseph Orison on the York County side, & opposite to lands of the McCall's ferry Bridge Company on the Lancaster County side situate between the lower end of Cossac Island & the York Shore containing forty perches Strict measure, surveyed in pursuance of a warrant dated 3rd day of August A. D. 1819 granted to Matthew McCall

pr. Jacob Hishman D.S.

To Jacob Spangler Esqr.
Surveyor General.

IN TESTIMONY that the above is a copy of the original remaining on file in the Department of Internal Affairs of Pennsylvania, made conformably to an Act of Assembly approved the 16th day of February 1833, I have hereunto set my hand and caused the Seal of said Department to be affixed at Harrisburg, this sixteenth day of January 1908

Henry Houch
Secretary of Internal Affairs.